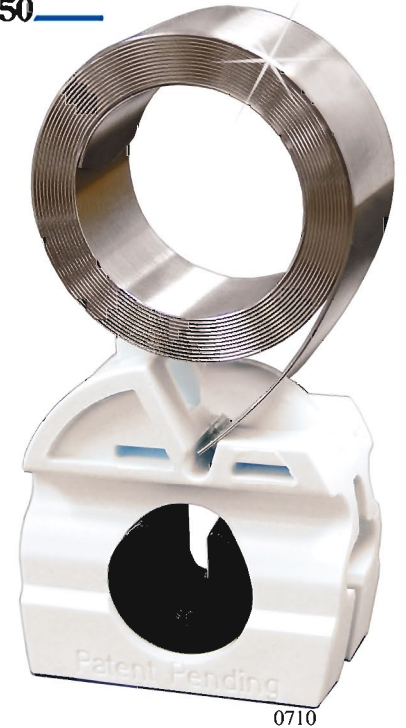


The  
**Curve**  
*Balance System*  
Patent Pending



## Features

- Revolutionary asymmetric design
- Low operating forces
- Available with 9 lb. (40") AAMA qualified springs
- Spring assembly is easy, no screws required!

\* (Pre-assembled *Curve Balance Systems* are also available)

## Technical Data

- Material: 1/2" wide, Type 301 stainless steel.
- Loads available: 3 lb. through 9 lb.
- Lengths available:
  - 3 lb: 26"
  - 4 lb. through 9 lb: 40"
- Attachment method: Elongated hole mounts on hook of shoe.
- Notes:
  - 1) Different spring tail lengths allow for double, triple & quad combinations. Up to 36 lbs. can be configured on one balance assembly.
  - 2) After installation, spring(s) will not be visible from inside window.

**AAMA 902-07**  
**Qualified**

John Evans' Sons, Inc., established in 1850, celebrates 30+ years producing constant force window balance springs with the finest quality, delivery and service.

**John Evans' Sons, Inc.**

An ISO 9001:2000 Company

1 Spring Ave.

P.O. Box 885

Lansdale, PA 19446

Phone: 215-368-7700

Fax: 215-368-9019

sales@springcompany.com

www.springcompany.com